



## AP DESIGNS CHIN PAD COVERS AND MATS FOR YAMAHA SUPER JET

SUPER JET 96+



Black/Black

<b>Yamaha</b>	<b>Part No.</b>
Chin Pad	<b>YASJ96CP</b>

SUPER JET 96+



<b>Yamaha</b>	<b>Flame-Red</b>	<b>Part No.</b>
Super Chin Pad		<b>YASJ96CP-FLME-B</b>

SUPER JET 96+



Yellow/White

<b>Yamaha</b>	<b>Part No.</b>
Super Chin Pad Hot Products Special Design	<b>YASJ96CP-YLW/WH</b>

SUPER JET 96+



<b>Yamaha</b>	<b>Part No.</b>
Side Mat	<b>YASJ96SM</b>

SUPER JET 96+



<b>Yamaha</b>	<b>Part No.</b>
Side Mat with Lifter 10" Side Mat with Lifter 15"	<b>YASJ96SM-LFT</b> <b>YASJ96SM-LFT15</b>

SUPER JET 96+



<b>Yamaha</b>	<b>Part No.</b>
Bottom Mat	<b>YASJ96BM</b>

## AP DESIGNS CHIN PAD COVERS AND MATS FOR KAWASAKI

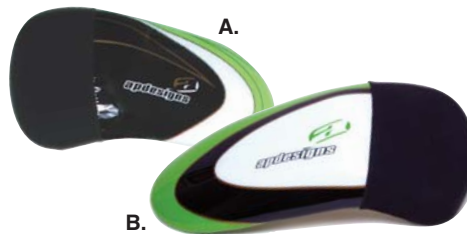
750 SX/SXI/SXI PRO & 800 SX-R



Black/Black

<b>Kawasaki</b>	<b>Part No.</b>
750 Chin Pad	<b>KA750SXCP</b>
800 Chin Pad	<b>KA800SXRCP</b>

750 SX/SXI/SXI PRO & 800 SX-R



<b>Kawasaki</b>	<b>Part No.</b>
A. 750 Chin Pad	<b>KA750SXCP-GRN/W</b>
B. 800 Chin Pad	<b>KA800SXRCP-SUPE</b>

800 SX-R



<b>Kawasaki</b>	<b>Part No.</b>
Super Chin Pad	<b>KA800SXRCP-FL-RD</b>

750 SX/SXI



<b>Kawasaki</b>	<b>Part No.</b>
Side Mat	<b>KA750SXSM</b>
Side Mat with Lifter 10"	<b>KA750SXSM-LFT</b>
Side Mat with Lifter 15"	<b>KA750SXSM-LFT15</b>
Bottom Mat	<b>KA750SXBM</b>

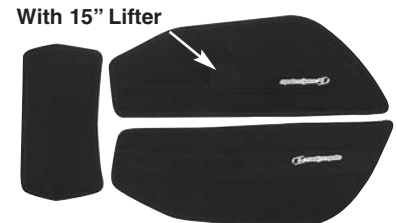
800 SXR



Special long length bottom mat for kicktail

<b>Kawasaki</b>	<b>Part No.</b>
Side Mat	<b>KA800SXSM</b>
Side Mat w/Lifter 10"	<b>KA800SXRSM-LFT</b>
Side Mat w/Lifter 15"	<b>KA800SXRSM-LFT1</b>
Bottom Mat	<b>KA800SXRBM</b>

800 SXR

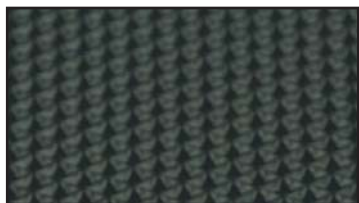


With 15" Lifter

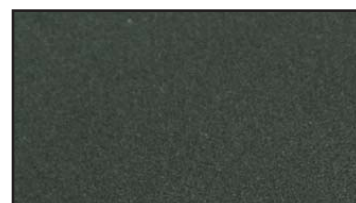
<b>Kawasaki</b>	<b>Part No.</b>
Side Mat with Lifter	<b>KA800SXRSMRC</b>

\* This Side Mat is specially designed for wrapping onto Rail Cap #KASRUP402.

FOUR STROKE  
 INTAKE SYSTEMS  
 ENGINE/GASKETS  
 EXHAUST  
 DRIVE LINE HANDLING  
 ELECTRICAL  
 WATERLINE /BILGE  
 STEERING & CONTROLS  
 BODY  
 ACCESSORIES  
 SERVICE TOOLS /HARDWARE  
 CHEMICAL



Ultra Grip Material



Sure Grip Material

## ULTRA GRIP SEAT COVERS & SURE GRIP SEAT COVERS

**ULTRA GRIP** — The Ultra Grip material is a rubberized, waffle patterned material designed for the recreational and racing enthusiast. It provides exceptional grip without sacrificing rider comfort. Because of its rubberized nature, the rider can ride comfortably in swim trunks and still expect exceptional traction.

**SURE GRIP** — Our Sure Grip material is an aggressive material designed for watercraft racers. It is extremely durable and provides exceptional grip for racing applications. We recommend that riders wear a wetsuit when using a Sure Grip seat cover.

### YAMAHA

GP800R/1200R/1300R



Black/White/Silver

VX110



Black/White/Silver

GP1200



Black/Silver/White

Yamaha	Part No.
Ultra Grip Top	<b>UYAGPR-BK/WT/SL</b>
Sure Grip Top	<b>SYAGPR-BK/WT/SL</b>

Yamaha	Part No.
Ultra Grip Top	<b>UYAVX110-B/W/S</b>
Sure Grip Top	<b>SYAVX110-B/W/S</b>

Yamaha	Part No.
Ultra Grip Top	<b>UYAGP-BK/SL/WT</b>
Sure Grip Top	<b>SYAGP-BK/SL/WT</b>

### SEA DOO

RXP



A. Black/Silver/Black



B. Black/Yellow/Silver

4-TEC GTX RXT



A. Black/Silver/Rust



B. Black/Silver/Black

XP/XPL (97-02)



A. Black/Silver/Yellow

Sea Doo	Part No.
A. Ultra Grip Top	<b>USDRXP-BK/SL/BK</b>
A. Sure Grip Top	<b>SSDRXP-BK/SL/BK</b>
B. Ultra Grip Top	<b>USDRXP-BK/SL/BK</b>
B. Sure Grip Top	<b>SSDRXP-BK/SL/BK</b>

Sea Doo	Part No.
A. Ultra Grip Top	<b>USDGTX-BK/SL/RU</b>
A. Sure Grip Top	<b>SSDGTX-BK/SL/RU</b>
B. Ultra Grip Top	<b>USDRXP-BK/SL/BK</b>
B. Sure Grip Top	<b>SSDGTX-BK/SL/BK</b>

Sea Doo	Part No.
A. Ultra Grip Top	<b>USDXP97-BK/SL/YW</b>
A. Sure Grip Top	<b>SSDXP97-BK/SL/YW</b>
Ultra Grip Top	<b>USDXP97-BLK/BLK</b>
Sure Grip Top	<b>SSDXP97-BLK/BLK</b>

### KAWASAKI

ULTRA 250



Black/Red/White  
Black/Red/Silver

ULTRA 250



Black/Blue/White  
Black/Blue/Silver

ULTRA 250



Black/Green/White  
Black/Green/Silver

Kawasaki	Part No.
Ultra Grip Top	<b>UKAU250-BK/RD/W</b>
Sure Grip Top	<b>SKAU250-BK/RD/W</b>
Ultra Grip Top	<b>UKAU250-BK/RD/S</b>
Sure Grip Top	<b>SKAU250-BK/RD/S</b>

Kawasaki	Part No.
Ultra Grip Top	<b>UKAU250-BK/BU/W</b>
Sure Grip Top	<b>SKAU250-BK/BU/W</b>
Ultra Grip Top	<b>UKAU250-BK/BU/S</b>
Sure Grip Top	<b>SKAU250-BK/BU/S</b>

Kawasaki	Part No.
Ultra Grip Top	<b>UKAU250-BK/GN/W</b>
Sure Grip Top	<b>SKAU250-BK/GN/W</b>
Ultra Grip Top	<b>UKAU250-BK/GN/S</b>
Sure Grip Top	<b>SKAU250-BK/GN/S</b>

# KAWASAKI

12F/15F 2006



Black/Silver/Green/Black  
Black/Silver/Red/Black

Kawasaki	Part No.
Ultra Grip Top	UKASTX06-B/S/G/
Sure Grip Top	SKASTX06-B/S/G/
Ultra Grip Top	UKASTX06-B/S/R/
Sure Grip Top	SKASTX06-B/S/R/

STX-R/12F/15F



A. Black/Green/Silver/Carbon



B. Black/Red/Black/White

Kawasaki	Part No.
A. Ultra Grip Top	UKASTX-B/G/S/C
A. Sure Grip Top	SKASTX-B/G/S/C
B. Ultra Grip Top	UKASTX-B/R/B/W/
B. Sure Grip Top	SKASTX-B/R/B/W/

ULTRA 150/ULTRA 130 DI



A. Black/Silver/Blue



B. Black/Silver/Red

Kawasaki	Part No.
A. Ultra Grip Top	UKAULT-BK/SL/BL
A. Sure Grip Top	SKAULT-BK/SL/BL
B. Ultra Grip Top	UKAULT-BK/SL/RD
B. Sure Grip Top	SKAULT-BK/SL/RD

## AP DESIGNS SURE GRIP MAT SETS

YAMAHA GP 800R/  
1200R/1300R



Black/Black

Yamaha	Part No.
Yamaha GP 800R / 1200R / 1300R	YAGPRMT-BLK/BLK

KAWASAKI ULTRA 150, 250  
1200 STX-R, 15F



Black/Black

Kawasaki	Part No.
Ultra150	KAULTMT-BLK/BLK
STXR, 12F, 15F	KASTXR-BLK/BLK
Ultra250	KAU250MT-BLK/BL

SEA DOO RXP



Black/Black

Sea Doo	Part No.
RXP	SDGTXMT-BLK/BLK

SEA DOO GTX DI (02-03),  
4-TEC (02-05), RXT



Black/Black

Sea Doo	Part No.
RXT	SDRXTMT-BLK/BLK

KAWASAKI STX-R / ULTRA 250  
SIDE MAT WITH LIFTER REPLICA



Black/Black

Kawasaki	Part No.
1200STX-R	KASTXRSM-BLK/BL
Ultra 250	KAU250SM-BLK/BLK

HYDROSPACE MATS



Black/Black  
With 15"  
Side Lifter

Hydrospace	Part No.
Bottom Mat	HYDROSPACEBM
Side Mat	HYDROSPACEBM
Bottom for Kick Tail	HYDROSPACEBMKT



Aftermarket Bars  
Installed - OEM  
Protective Cover  
No Longer Fits

Safety Switch  
Mounting Bracket

## HANDLE BAR STEERING MOUNT COVER AND SAFETY SWITCH BRACKET

When you install aftermarket handlebars on your Sea Doo using the OEM steering system the OEM pad cover will no longer fit. AP Designs has developed this new pad to allow for the bars to fit properly and protect you while riding your Sea Doo as well as to hide the ugly cast steering system. Also developed in conjunction with this cover is a safety switch mounting bracket.

Sea Doo	Part No.
Handlebar Mount Cover for Sea Doo RXP, RXT, RX, GSX, GTX, GTI, GTS, GSI, GS 96+	SD-HCV
Safety Switch Mounting Bracket	N-SDSWMT

FOUR  
STROKE

INTAKE  
SYSTEMS

ENGINE/  
GASKETS

EXHAUST

DRIVE LINE  
HANDLING

ELECTRICAL

WATERLINE  
/BILGE

STEERING  
& CONTROLS

BODY

ACCESSORIES  
/HARDWARE

SERVICE TOOLS

CHEMICAL





# JET TRIM SEATCOVER

Jet Trim's handcrafted seat covers are hand cut, hand sewn, and specifically fitted to each individual year and model. Whether you're a recreational or pro-level rider, we can custom tailor each seat cover to your requirements. Call today for a template for your custom designed seat cover.

*Pricing, manufacturing and shipping time varies.  
Please call for details and pricing based on your customized design.*

FOUR STROKE  
INTAKE SYSTEMS  
ENGINE/GASKETS  
EXHAUST  
DRIVE LINE HANDLING  
ELECTRICAL  
WATERLINE /BILGE  
STEERING & CONTROLS  
BODY  
ACCESSORIES  
SERVICE TOOLS /HARDWARE  
CHEMICAL

**NON SLIP GRIPPER • FOR THE TOP OF THE SEAT**

GRAY	BLACK	BLUE	WHITE	GREEN
------	-------	------	-------	-------

**MEDIUM SLIP • FOR THE TOP OF THE SEAT**

RED	BLACK	SILVER	GOLD
PURPLE	BLUE	YELLOW	

**NON SLIP SUEDE • FOR THE TOP OF THE SEAT**

RED	PURPLE	GRAY	BLACK	BLUE
-----	--------	------	-------	------

**SMOOTH GRAIN • FOR THE SIDE OR TAIL OF THE SEAT**

BLACK	WHITE	LT GRAY	DRK GRAY	SILVER	LT GREEN	WORX GREEN	DRK GREEN	APPLE GREEN	SPICE BROWN	CLASSIC BROWN
BLOOD	DRK RED	BRIGHT RED	LT BURGANDY	DRK BURGANDY	RAVE GREEN	TURQUOISE	PEAL BLUE	MAGENTA		
BRIGHT ORANGE	RX ORANGE	YELLOW ORANGE	BRIGHT YELLOW	MUSTARD YELLOW	LT BLUE	GP BLUE	DRK BLUE	PURPLE		

**SOFT SUEDE • FOR THE SIDE OR TAIL OF THE SEAT**

BLACK	LT GRAY	RED
GREEN	BLUE	BROWN

**OSTRICH • FOR THE SIDE OR TAIL OF THE SEAT**

BLACK	LT GRAY	DRK GRAY	SADDLE BROWN
LT BROWN	RED	BURGANDY	WHITE



**SEA DOO RXP**

Sea Doo Part No. SDRXP101  
SeaDoo RXP Seat Cover



**SEA DOO 4-TEC/RXT**

Sea Doo Part No. SDRXT101  
SD 4-TEC/RXT Seat Cover



**SEA DOO XP/XP-L**

Sea Doo Part No. SDXP101  
SeaDoo XP/XP-L Seat Cover



FOUR STROKE  
INTAKE SYSTEMS  
ENGINE/GASKETS  
EXHAUST  
DRIVE LINE HANDLING  
ELECTRICAL  
WATERLINE /BILGE  
STEERING & CONTROLS  
BODY  
ACCESSORIES  
SERVICE TOOLS /HARDWARE  
CHEMICAL



**YAMAHA FX SHO (09)**

Yamaha Part No.  
Yamaha FX SHO (08-09) **YSHO101**



**YAMAHA FZR (09)**

Yamaha Part No.  
Yamaha FZR Spike Design (09) **YFZR101**



**YAMAHA FZS (09)**

Yamaha Part No.  
Yamaha FZS Retro Design (09) **YFZS101**



**YAMAHA FX SHO (08)**

Yamaha Part No.  
Yamaha FX SHO (08) **YSHO101**



**YAMAHA FZR (09)**

Yamaha Part No.  
Yamaha FZR Retro Design (09) **YFZR102**



**YAMAHA FZS (09)**

Yamaha Part No.  
Yamaha FZS Spike Design (09) **YFZS102**



**YAMAHA FX-140/160**

Yamaha Part No.  
Yamaha FX 140/160 **YFX140101**



**YAMAHA GPR**

Yamaha Part No.  
Yamaha GPR **YGPR101**



**YAMAHA GP**

Yamaha Part No.  
Yamaha GP **YGP101**



**KAW ULTRA 250X/LX**

Kawasaki Part No.  
Jet Trim Ultra 250X/LX **KU250X101**



**KAW STX 00+/12F/15F 06+**

Kawasaki Part No.  
Kaw STX (00+)/12F/15F (06+) **K15F101**



**KAW STX-R/15F - 02-05**

Kawasaki Part No.  
Kaw STX-R/15F (02-05) **KSTXR101**



## HYDRO-TURF MATS

Hydro-Turf® is a leading manufacturer of performance traction mats and seat covers. Hydroturf offers some of the best looking, best gripping ride mats on the market. Superior traction grooves and excellent durability are the choice for amateur and professional riders looking to upgrade or replace their existing traction mats. Our jetski and personal watercraft upholstery kits are designed to replace worn or damaged seats and provide the rider superior traction and resistance to elements.

Yamaha	Part No.	Stocked Available Colors
Wave Runner	HT70	BLK
FX1	HT71	BLK, PUR
SUV	HT72	BLK, GRA
Wave Runner III	HT73	BLK, PUR
Wave Blaster	HT74	BLK, BW
Wave Blaster II	HT741	BLK
Wave Blaster 800	HT742	BLK
Super Jet 90-95	HT75	BLK, PUR
Super Jet 96-08	HT751	BLK, PUR
Wave Raider	HT76	BLK, ROY
VXR, VXR-Pro	HT77	BLK
Wave Venture/XL1200(98)/XL700 & 760 (98-04)	HT78	BLK, DG
XL1200 LTD 99-01/ XL800/ XLT1200/XLT800	HT784	BLK, DP
GP/GP1200R (99)	HT79	BLK, BW
GP1300R/GP1200R(00-02)		
GP800R(01-05)	HT791	BLK, GRY, TRI
FX140, FX Cruiser, FXHO (02-08), FX SHO (08), FX Cruiser SHO (08), FZR (09), FZS (09)	HTFX	BLK
VX110 (05)	HTVX	BLK
FX SHO (08)	HTFX1	BLK
FX Cruiser SHO (08)		

Hydrospace	Part No.	Stocked Available Color
Hydrospace S4 with 2" Kick Tail	HT100	BLK

Sea Doo	Part No.	Stocked Available Colors
GTI (06-08)	HT824	BLK
XP-93, SP Family -94	HT80	BLK, PUR
GT Family 90-95,		
GTI 96, GTS 96-00	HT82	BLK, PUR
GTX 96-02, GTI 97-00	HT821	BLK, BW
GTS (01)/GTI (01-05)	HT823	BLK
XP 93-96, SP Family 94-99	HT83	BLK, PUR
GS Family	HT831	BLK, BW
XP 97-04	HT84	BLK, TRI
LRV	HT85	BLK, GRA
RX / RXX	HT86	BLK
HX 95-97	HT87	BLK, PUR
GTX DI (02) & 4-TEC (02), RXT, GTX (03-06)	HT88	BLK
RXP	HT89	BLK
3D	HT3D	BLK
RXT-IS/GTX Limited (09)	HT882	BLK

Kawasaki	Part No.	Stocked Available Colors
JS300/440/550	HT20	BLK, PUR, ROY
JF650X2	HT40	BLK, PUR, ROY
JS550SX	HT55	BLK, ROY
ZXI	HT60	BLK, PUR
ULTRA 150, Ultra 130	HT61	BLK
Ultra 250X, Ultra 250 LX (07-08)	HT62	BLK
ST/STS/750STX&900STX(pre 99)	HT63	BLK, PUR, ROY
STX1100 97-99		
STX900 99-00, 900STS(01-02)	HT631	BLK, PUR
STX1100DI (00-02), All STX(01-06), 12F, 15F, STXR	HT64	BLK
JF650SX	HT65	BLK, PUR, ROY
750SS/XI/XIR	HT66	BLK
JF750SX/SXI	HT67	BLK, PUR, ROY
800 SX-R	HT68	BLK, PUR, ROY
800 SX-R with Kick Tail (1")	HT68K	BLK

Honda	Part No.	Stocked Available Color
F-12/F-12X	HT05	BLK
R-12/R-12X	HT06	BLK
F-15X (08)	HT07	BLK

Polaris	Part No.	Stocked Available Colors
SL/SLX-99, 785Pro 99-01	HT90	BLK, PUR, ROY
Hurricane	HT91	BLK, BW
SLXH(98), SLH, SLX(99)	HT92	BLK
SLH/SLX/Pro (00-01)	HT921	BLK
SLT, SLTX, X-45	HT93	BLK
Virage, Freedom	HT94	BLK
Genesis	HT95	BLK
Octane (Bottom Mat only)	HT96	BLK

\*When ordering, add color code to Part Number.

## COLOR CODE

Color	Code	Color	Code	Color	Code	Color	Code	Color	Code
Black	BLK	Dark Purple	DP	Lime Green	LGN	Red	RED	Tri-Color	TRI
Black/White Marble	BW	Deep Blue	DB	Orange	ONG	Royal Blue	ROY	White	WHT
Camouflage	CAM	Granite	GRA	Pink	PK	Royal Marble	RM	Yellow	YLW
Dark Gray	DGY	Light Blue	LBL	Purple	PUR	Tan	TAN	Yellow Camo	YLWCAM
Dark Green	DG	Light Gray	LGY	Purple Marble	PM	Teal	TEL		



# HYDRO-TURF SPECIAL MATS FOR KAWASAKI 750 & 800



HT67F

HT68BF

HT68RC

\*All special mats only available in black.

Kawasaki	Part No.
750SXI Mats for use with "Digger" Footholds	HT67F
800 SXR Mats for use with "Kicker" Footholds and Blowision Rail Caps	HT68BF
800 SXR Mats with 1" kick tail for use with Blowision Rail Caps	HT68RC
Blowision Dawson "Digger" Footholds	AWCO124
Blowision "Kicker" Footholds	AWCO125
Blowision Composite Rail Caps	KASRUP402

# HYDRO-TURF SPECIAL MATS FOR YAMAHA SUPER JET



HT751F

HT751FD

HT751BF

\*All special mats only available in black.

Yamaha	Part No.
Super Jet (96-08) Mats for use with Wamilton Footholds	HT751F
Super Jet (96-08) Mats for use with Blowision "Digger" Footholds	HT751FD
Super Jet (96-08) Mats for use with Blowision "Kicker" Footholds	HT751BF
Bumper Rail Strips/Mats for (all stand up models) brands	TS50
Wamilton "Ricker" Foothold	FHWAM



SD01



Mats displayed on boat.

# HYDRO-TURF MATS FOR JET BOAT FLOORING

◆ Non Inventory Items: Special Order Only ◆

Yamaha	Part No.
Exciter (All years)	Y01
LS2000 / LX2000 (99)	Y02A
LS2000 / LX2000 (2000+)	Y02
LS210 / LX210 / AR210 (-05)	Y021
XR 1800	Y03
SR230 / SX230 / AR230 (05-06)	Y04
SR210 / SX210 / AR210 / 2102 (06-08)	Y05
SR230 / SX230 / AR230 / 232 (07-08)	Y06

\*When ordering, add color code to Part No.

Sea Doo	Part No.
Speedster (94-95)	SD01
Speedster (96) / Sportster (96-99)	SD02
Challenger (96-00) / Speedster (97)	SD04
Challenger 1800 (97-04)	SD05
Sportster 1800 (98-00)	SD06
Speedster SK (99)	SD07
Speedster (98-99)	SD08
Challenger 2000 (00-04) / X (02-04)	SD09
Challenger X (03-05)	SD091
Islandia (00-08) "Available Flat Only"	SD10
Utopia 185 (01-05)	SD11
Speedster (00-03) / Speedster 160 (04)	SD12
Challenger (01) / Sportster (01-05)	SD13
Utopia 205 (02-08) / SE (07)	SD14
Sportster 4-Tec (03-05) / SCIC (05-06)	SD15
Speedster 200 (05-08) / Wake (06-08)	SD16
Speedster (07-08)	
Challenger 180 (05-06)	SD17
Challenger 180 (07-08)	SD171
Challenger 230 / SE (07-08) 13 piece set	SD18
Challenger 230 / SE (07-08) 2 piece set	SD18R

\*When ordering, add color code to Part Number

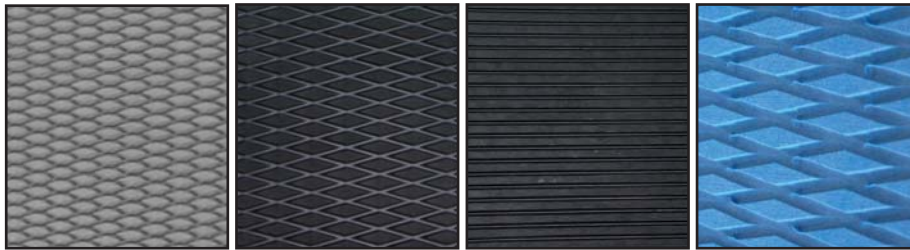
◆ Mats are available only in colors listed. When ordering, add color code to Part No. ◆ Color swatch kit available upon request



FOUR STROKE  
INTAKE SYSTEMS  
ENGINE/GASKETS  
EXHAUST  
DRIVE LINE HANDLING  
ELECTRICAL  
WATERLINE /BILGE  
STEERING & CONTROLS  
BODY  
ACCESSORIES SERVICE TOOLS /HARDWARE  
CHEMICAL

# HYDRO-TURF

FOUR STROKE  
INTAKE SYSTEMS  
ENGINE/GASKETS  
EXHAUST  
DRIVE LINE HANDLING  
ELECTRICAL  
WATERLINE /BILGE  
STEERING & CONTROLS  
BODY  
ACCESSORIES  
SERVICE TOOLS /HARDWARE  
CHEMICAL



SHT40MD-DGY      SHT40MD-BLK      SHT40MG-BLK      SHT40CD

Hydro-Turf Sheet Only 40" x 62"	Part No.
40" x 62" Cut Groove (all colors) (Grooves are 62" long)	SHT40CG
40" x 62" Cut Diamond (all colors)	SHT40CD
40" x 62" Molded Groove (Grooves are 62" long) - Black	SHT40MG-BLK
40" x 62" Molded Diamond - Black	SHT40MD-BLK
40" x 62" Molded Diamond - Dark Gray	SHT40MD-DGY

*\*Note: Hydro-Turf grooved mat sheets may not always come with a precise clean edges or corners due to the manufacturing process.*



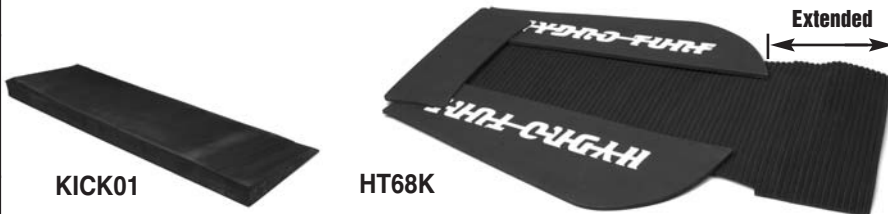
Hydro-Turf Underpad Sheet 39" x 78"	Part No.
39x78 Underpad 3/4" (20mm) thick	SHTUPAD20
39x78 Underpad 5/16" (8mm) thick	SHTUPAD8
39x78 Underpad 3/16" (5mm) thick	SHTUPAD5



## SIDE LIFTER WEDGE

For a quick and semi-permanent advantage. Great when used for racers & beginner freestylers. Provides the "wedge" you need. Color: Black Only

Description	Part No.
2" x 13" Black x 2 pieces	TS43
2.5" x 24" Black x 2 pieces	TS44



## HYDRO-TURF KICK TAIL

Add a kick tail to your watercraft 1" or 2" wedge. If installed under the traction mats, some models of watercraft may require an extended mat.

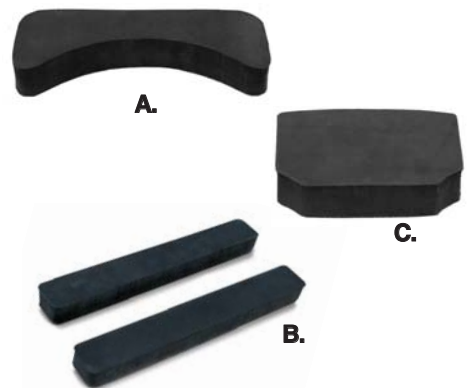
Description	Part No.
Kick Tail 5.5" x 17" x 1" Tall	KICK01
Kawasaki 800 SX-R Mat with 1" Kick Tail	HT68K-BLK
Kick Tail 5.5" x 17" x 2" Tall	KICK02

## MAT ADHESIVE



Description	Part No.
Weldwood Contact Cement (16 oz.)	CC20

## HANDLE POLE SHOCK PADS



Protects engine hood from damage when Handlepole is dropped. Color: Black only

Description	Part No.
A. Kawasaki 750SX/SXI/800SXR (1)	TS401
B. Kawasaki JS440/550 (2)	TS411
C. Yamaha Super Jet (1)	TS421



JOHN KASZER  
2008 WORLD FINALS • LAKE HAVASU, AZ  
PHOTO COURTESY OF JIN OMURA





**57-7032**  
Flame Design

### JET TRIM SPLASH GUARDS

Description	Part No.
Small • 52" Length • For two seat PWC	57-7029
Large • 60" Length • For three seat PWC	57-7030
Large • 58" Length <i>FLAME DESIGN</i> For three seat PWC	57-7032

### HYDRO-TURF SPLASH GUARDS



Description	Part No.
Hydro-Turf Splash Guard (5.5" x 40") Rivets Included	57-7035



### MACC RACING CARBON RACING REAR SEAT

Macc Racing has developed a Carbon Racing seat for the Ultra 250. The rear seat is about 15lbs lighter than stock and features a cool air induction intake while keeping water out of the engine compartment. \*This Carbon Racing Rear seat is intended for a performance advantage and is not intended to be used as a seat for a passenger.



Description	Part No.
Macc Racing Ultra 250 Carbon Racing Rear Seat	MR-ULTRASEAT



### TBM SPLASH GUARD

FOR STAND-UP MODEL PWC

Description	Part No.
Splash Guard (3" x 34")	TBM128



Inside View



Inside View



Top View

### HYDRO-TURF TRACTION STRIPS



### AP DESIGNS SPLASH GUARD

For Super Jet and K750SXI/Pro

Description	Part No.
Splash Guard (3.25" x 33")	57-7037

2" x 15"



4" x 15"



Description	Part No.
2"x15" Traction Strips 8 pieces per package	TS02
4"x15" Traction Strips 4 pieces per package	TS04



FOUR STROKE	INTAKE SYSTEMS	ENGINE/GASKETS	EXHAUST	DRIVE LINE HANDLING	ELECTRICAL	WATERLINE /BILGE	STEERING & CONTROLS	BODY	ACCESSORIES	SERVICE TOOLS /HARDWARE	CHEMICAL
-------------	----------------	----------------	---------	---------------------	------------	------------------	---------------------	------	-------------	-------------------------	----------

FOUR STROKE  
 INTAKE SYSTEMS  
 ENGINE/GASKETS  
 EXHAUST  
 DRIVE LINE HANDLING  
 ELECTRICAL  
 WATERLINE /BILGE  
 STEERING & CONTROLS  
 BODY  
 SERVICE TOOLS ACCESSORIES /HARDWARE  
 CHEMICAL



### HYDRO-TURF HOOD SEALS

Quality replacement foam hood seal gaskets.

Description	Part. No.
Kawasaki JS440/550	TS55
Yamaha Super Jet	TS56



### HOOD Baffle INSERT FOR FACTORY PIPE 800 SX-R

Use this composite drop in baffle insert to cover the area removed during installation of the factory pipe dry pipe for Kawasaki 800SXR.

Description	Part. No.
Hood Insert 800 SX-R	05-02-108



### R&D SPACE MAKER HOOD INSERT FOR YAMAHA SUPERJET

This insert allows you to remove a portion of the stock hood inner liner and foam, replacing it with the Space Maker Hood Insert creating the extra clearance needed to run the Super Jet Dry Pipe.

Description	Part. No.
Yamaha Super Jet	652-70110



### STORAGE COMPARTMENT & SEAT LATCH ASSEMBLY FOR SEA DOO

Economy replacement of plastic latch assembly used in most Sea Doo watercraft.

Description	Part. No.
Seat Latch Assembly (OEM # 269-00-016)	011-800
Front Compartment Latch RX, RXDI, GTI LE, GTI XP 03-04 (OEM # 269-501-125)	011-805



### RIVA MIRROR BLOCK-OFF KIT FOR KAWASAKI

Lightweight aluminum block-off plates fill openings left when mirrors are removed for competition. Includes reverse lever block-off.

Description	Part. No.
Kawasaki Ultra 250X/LX	RK5-U250X-MB



### RIVA HIGH FLOW HOOD KIT FOR SEA DOO

Integrated ducting delivers increased cool air to engine compartment improving performance.

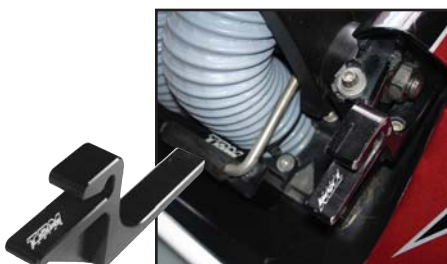
Description	Part. No.
High Flow Hood Kit RXP and RXP-X	RS5-0050



### KAWASAKI SXR BOW EYE COMPOSITE FRONT COVER

What was Kawasaki thinking? Tired of putting your SXR on the trailer backward so you can actually haul it on your stand-up trailer with your normal bow coupler? Blowsion has the answer.

Description	Part. No.
Kawasaki 800 SX-R Bow Eye Composite Front Cover	05-02-304



### 800 SX-R BILLET HOOD HOOKS

Introducing our Billet Front Hood Hooks for the SX-R 800. A direct replacement for the weak O.E.M. hood latches that bend and commonly fail, our hood latches are manufactured from 6061 billet aluminum. We eliminated all stress risers to ensure our latches will stand up to the most extreme riding conditions eliminating the chance of a failure that can lead to the hood coming loose.

Description	Part. No.
800 SX-R Billet Hood Hooks	TBM109



### KAWASAKI OEM 800 SX-R HOOD AIR INTAKE BLOCK-OFF KIT

The easy solution to water slamming its way into your OEM SXR hood. This trick block-off kit will allow you to stop ingestion of water into the engine compartment, thus limiting the damage caused by racing in rough conditions, wave jumping, submarines, etc. Trick and simple!

Description	Part. No.
800 SX-R Intake Block-Off	04-04-401





**FRONT HOOD HOOKS (96+SJ)**

Don't lose your hood again due to poor spring tension with the stock hooks. Our billet aluminum hooks won't tweak or budge in even the most extreme of conditions. Carbon grey anodized. Sold as a pair complete with stainless fasteners.

Description	Part No.
Superjet Hood Hooks	04-04-105



**FRONT HOOD HOOKS (SX-R)**

Utilizing the many years of Super Jet Freestyle and surf quality hood hook design experience, these bulletproof SX-R billet hood hooks allow for the ultimate abuse of your 2003 and newer SX-R on the race course, river or in big surf.

Description	Part No.
SX-R Hood Hooks	04-04-101



**BILLET HOOD LATCH**

Recently updated and re-machined to also fit the Kawasaki SXR800, SXI Pro all Yamaha Superjet and FX1.

Description	Part No.
Hood Latch Clear	04-04-008
Hood Latch Green	04-04-004
Hood Latch Red	04-04-007



**SXR HAND HOLD KIT MID MOUNT**

SXR Mid Mount drop-in hand holds for stock hoods.

\*Left side mount will not fit with Factory Dry Pipe

Part No.	05-04-213
----------	-----------



**SXR HAND HOLD KIT STANDARD MOUNT**

SXR forward Mount drop-in hand holds for stock hoods.

Part No.	05-04-214
----------	-----------



**SJ96+ HAND HOLD KIT MID MOUNT**

Super Jet 96+ Mid mount drop-in hand holds for stock hoods.

Part No.	05-04-271
----------	-----------



**HAND HOLD KIT "Q" HOLD MOUNT**

Universal mount drop-in hand holds are easily located on any flat surface.

Part No.	05-04-203
----------	-----------



**WAVEBLASTER SPRAY NOZZLE BLOCK-OFF**

This little fitting neatly replaces the water spray nozzle found on the rear

of Yamaha WaveBlasters.

Description	Part No.
Spray Nozzle Block-Off	81-736



**BLOWSION STAINLESS HOOD LATCH ASSEMBLY**

Fits all 650/750/800/X2 Kawasaki. May also be used to retro-fit all years Yamaha Superjet and Fx1. Comes complete with latch assembly and hood clip. 100% polished stainless. Trick and functional. Why incur the factory OEM replacement expense?

Description	Part No.
Stainless Hood Latch	04-04-030



**SX-R RAIL CAPS**

Newly re-tooled and now an even better fit! The composite crew at Blowsion has made new mold sets off of Blowsion's SXR Carbon Hull making these new generation SXR Rail Caps a PERFECT fit! A complex fitting piece now made with the best fit and features available. Get rid of those extremely slippery factory rubber black rails and go composite.

Description	Part No.
Blowsion SX-R Rail Cap	KASRUP402
800 SXR Mats for use with "Kicker" Footholds and Blowsion Rail Caps	HT68BF
800 SXR Mats with 1" kick tail for use with Blowsion Rail Caps	HT68RC





### LUSTIC KICKER FOOTWELLS

Designed especially for all years Super Jet and the 800 SXR, these beauties have been used exclusively by Josh Lustic on his Blowsion prepared Factory Pro Kawi SXR 800. These custom molded fiberglass insets provide the room in the tray of your ski for lock down aerials.

Description	Part No.
Lustic Footwell	05-03-005
800 SXR Mats for use with "Kicker" Footholds & Blowsion Rail Caps	HT68BF
Superjet (96-08) Mats for use with Blowsion "Kicker" Footholds	HT751BF



### FOOTWELLS MAC MASHERS

No cutting of the wide SXR tray required. Design in conjunction with pro Kawasaki rider Chris MacClugage and Darren Hedlund. Experience the feel of a standard footwell cut out without having to notch out your SXR tray. 100% race legal.

Description	Part No.
Mac Footwell	05-03-006



### AWD PRODUCTS QUICK LOOP

A flexible tow loop is required for all watercraft of IJSBA Race. Specially designed to meet IJSBA regulation.

Description	Part No.
Watercraft with "Tow Hook"	QL-01
Watercraft with "Bow Eye"	QL-02



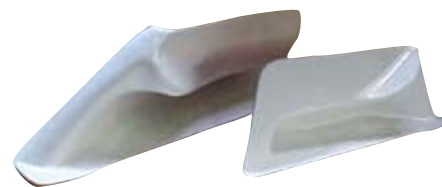
### DIGGER FOOTWELLS

Custom extruded and molded to fit your feet, the Dawson Digger footwell has been designed and updated for 2007. Considered a must have modification for any surf or freerider. The Digger features a recessed "notch" at the back of each footwell to allow rider to wedge foot during tail stands & surf recoveries.

Description	Part No.
Dawson Diggers	05-03-004
Superjet (96-08) Mats for use with Blowsion "Digger" Footholds	HT751FD
750SXI Mats for use with Blowsion "Digger" Footholds	HT67F



DERRICK KEMNITZ SR.  
2008 WORLD FINALS • LAKE HAVASU, AZ  
PHOTO COURTESY OF JIN OMURA



### FOOTWELLS KLOWNERS

Designed especially for the rider who needs MAX room in the tray. These hand-laid, molded fiberglass insets provide extended room in the tray of your ski to position your feet. Comfortably sized for large to very large feet, the Klawner footwells contour to your ankle and also feature a gentle protrusion over the top of your foot for better locking power. Built with safety and performance in mind, the Klawner footwells will keep you in your ski while inverted, and also easily let you go when you feel like you're going to need a hurried dismount to avoid facial impact on fiberglass.

Description	Part No.
Klawners Footwell	05-03-007



### WAMILTON "RICKTER" FOOTWELLS

A must have for surf riding. These Wamilton fiberglass footwells work with Hydro Turf SuperJet freestyle mats.

Description	Part No.
Superjet Rickter Footwells	FHWAM
Superjet (96-08) Mats for use with Wamilton "Rickter" Footwells	HT751F



Yamaha  
57-6280



Kawasaki  
57-6270

### ALUMINUM NOSE BUSHINGS

Description	Part No.
Yamaha All Silver	57-6280
Kawasaki 89+ Silver	57-6270
UMI Kawasaki 89+	JS-03200-CLR
Blowsion Extended Bow Eye	04-03-058





### UMI BILLET GAS CAPS

Yamaha	Part No.
Gas Cap Black	YA20110-BKA



### BLOWSION BILLET GAS CAPS

Kawasaki	Part No.
Clear	04-03-108
Green	04-03-104
Red	04-03-107
Black	04-03-101



### BLOWSION LOW PROFILE BILLET GAS CAPS

Yamaha	Part No.
Low Profile Clear	04-03-158
Low Profile Red	04-03-157
Low Profile Black	04-03-151
Low Profile Blue	04-03-152



### TBM BILLET EXHAUST FLANGE

Kawasaki 800 SXR	Part No.
Clear	TBM110-P
Black	TBM110



### HOT PRODUCTS BILLET GAS CAPS

Sea Doo	Part No.
Platinum	50-9530
Black	50-9531



### TBM RACING KAWASAKI BILLET GAS CAPS

Kawasaki	Part No.
Gas Cap Clear	TBM105-C
Gas Cap Black	TBM105-B



### TBM RACING BILLET FUEL FILLER NECKS

Kawasaki	Part No.
Fuel Filler Neck Kawasaki	TBM105-KFN
Fuel Filler Neck Yamaha	TBM105-YFN



### RIVA BILLET GAS CAPS

Yamaha	Part No.
Gas Cap Silver	RY840-1P
Gas Cap Black	RY840-1B



### ADA RACING BILLET YAMAHA FUEL CAP SOCKET

Billet aluminum fuel cap socket for the Yamaha Super Jet, WaveBlaster, & Wave Raider. Works with the stock plastic or aftermarket billet gas caps. Includes attached chain. Replaces the plastic Yamaha OE part# FN8-67833-00-00.

Description	Part No.
Yam Fuel Socket Black	34-450190



### BLOWSION BILLET EXHAUST NOZZLE

Kawasaki 800 SXR	Part No.
Clear	04-03-208
Green	04-03-204
Red	04-03-207
Black	04-03-201



### BILLET EXHAUST NOZZLE FOR YAMAHA SJ96+

Yamaha SJ96+	Part No.
Clear	04-03-258
Blue	04-03-252
Red	04-03-257
Black	04-03-251

FOUR STROKE  
INTAKE SYSTEMS  
ENGINE/GASKETS  
EXHAUST  
DRIVE LINE HANDLING  
ELECTRICAL  
WATERLINE /BILGE  
STEERING & CONTROLS  
BODY  
ACCESSORIES  
SERVICE TOOLS /HARDWARE  
CHEMICAL



Factory Matched Number Kits that resist fuel, fading and scratches. UV coated for shine and protection from the sun. Includes 4 sets of A-Z, 0-9. Total of 146 decals. Size 3" letters.

FOUR STROKE  
INTAKE SYSTEMS  
ENGINE/GASKETS  
EXHAUST  
DRIVE LINE HANDLING  
ELECTRICAL  
WATERLINE /BILGE  
STEERING & CONTROLS  
BODY  
ACCESSORIES  
SERVICE TOOLS /HARDWARE  
CHEMICAL

### Series 200

The original and still the most popular. Outline color shades into body color for that custom airbrushed look.



### Series 300

The first and still the best Factory Matched Carbon Fiber look made. We make the ONLY carbon fiber pattern that looks great in any color that you choose.

\* Made with real chrome material.



### Series 320

Solid body with no shading and a contrasting outline with drop shadow in our popular block font.

\* Made with real glitter.





## Series 305 EC

Same font as our series 320 except no outline. Solid body color.

# ABC123

BLK350EC

# ABC123

BLU350EC

# ABC123

GRN350EC

# ABC123

WHI350EC

# ABC123

RED350EC

## Series 200 EC

Economical one color kits with great style and solid color.

# 123ABC

BLK200EC

# 123ABC

TEA200EC

# 123ABC

WHI200EC



### Sticker-On! Decal Application Fluid

No more bubbled on or wrinkled decals.

### Sticker-Off! Decal Adhesive Remover

Removes messy sticker residue.

Description	Part No.
Sticker-On 2 oz.	964
Sticker-Off 2 oz.	965



### Custom Lettering Kit

1" Custom Letter Kit	Part No.
White	2400W
Black/Red	2410B
Chrome	2420C



### CARBON FIBER NUMBER PLATE BACKGROUNDS

Add style to your number plate background and still be race legal. 3 backgrounds per package.

Style	Yellow	White	
Precut	7248	7249	—
Slanted	8248	8246	8251
Universal	9248	—	9251



### "THE ORIGINAL" DUCKY



DUC-1000

DUC-1001

DUC-1002

Description	Part No.
Water Spot Remover	DUC-1000
32oz. Spray Bottle (946ml.)	
All Purpose Cleaner	DUC-1001
32oz. Spray Bottle (946ml.)	
PWC Detailer	DUC-1002
24oz. Spray Bottle (709ml.)	

### DUCKY WATER SPOT REMOVER — DUC-1000

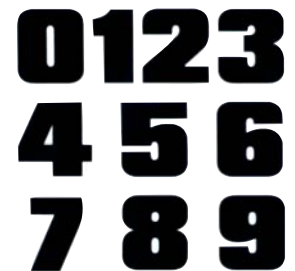
DUCKY, the first product ever developed specifically for the removal of hard water stains. Ducky Water Spot Remover is non-abrasive, environmentally friendly and easy to use. Simply spray on and wipe off. Use on fiberglass, glass, painted surfaces, chrome, etc.

### DUCKY ALL PURPOSE CLEANER — DUC-1001

Use Ducky All Purpose for cleaning: boat hulls, exhaust deposits, upholstery, carpet, other synthetics, chrome, mirrors and windows. Trigger spray activates rich, deep-cleaning foam that penetrates, lifts and suspends grease and grime.

### DUCKY PWC DETAILER — DUC-1002

Ducky Detailer creates a molecular bond with the surface of your finish, providing ultimate protection from harmful U.V. rays and soil accumulation. Ultra violet brightener will enhance colors while leaving a smooth-to-the-touch, wet-look finish.



### RACING NUMBERS

3 per package. 8" Tall. Black color only.

Number	Part	Number	Part
#0	H1310	#5	H1315
#1	H1311	#6	H1316
#2	H1312	#7	H1317
#3	H1313	#8	H1318
#4	H1314	#9	H1319

FOUR STROKE  
INTAKE SYSTEMS  
ENGINE/GASKETS  
EXHAUST  
DRIVE LINE HANDLING  
ELECTRICAL  
WATERLINE /BILGE  
STEERING & CONTROLS  
BODY  
ACCESSORIES  
SERVICE TOOLS /HARDWARE  
CHEMICAL

# AQUA Performance

## AQUA PERFORMANCE "AQUA STEPS"

The spring-loaded stainless steel step stays in the upward position until needed for added safety benefits. The step features a soft marine foam covering for your non-slip protection and grip. It comes completely assembled with all stainless steel hardware.



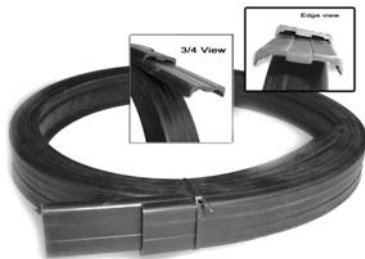
Yamaha	Part No.
FX140, HO	Not Available
Wave Blaster II (all years), Wave Blaster (96-98)	1096WBD-BLK
Wave Blaster (93-95) Wave Raider 701 (94)	1077Y-BLK
Wave Raider 701, 1100 (95)	1100YD-BLK
Wave Raider 701, 760, 1100 & STS (96-98)	1100WWD-BLK
Wave Runner III 650 (90-95)	1077Y3D-BLK
Wave Runner LX, VXR, Pro VXR (all years)	1070XL-BLK
Wave Venture 701 (94-95),	1095YWD-BLK
Wave Venture 760 (95, 97-99)	1095YWD-BLK
Wave Venture 701/760/1100 (96-00)	1070XL-BLK
XL701/760 (98-03)	1070XL-BLK
XL800, XLT800 (00-03)	1072XL-BLK
XL1200 (98)	1070XL-BLK
XL1200, XLT1200 (99-04)	1072XL-BLK
XL1200 LTD (99-01)	1072XL-BLK

Honda	Part No.
Aquatrax F-12, F-12X, R12X (02-04)	2002ATX-BLK

Polaris	Part No.
SLH (98-01)	1096SLTX-BLK
SLTH (98-00)	1096SLTX-BLK
SLTX (96-00)	1096SLTX-BLK
SLXH (98-00)	1096SLTX-BLK
Virage, TX, TXI, Freedom (00-04)	1096SLTX-BLK
SLT 700 (96-99)	1075PDT-BLK
SLT 750 (95)	1075PDT-BLK
Hurricane All	1075PDT-BLK

Sea Doo	Part No.
GS (97-02) GSI (97)	1098GS-BLK
GSX (96-00)	1096GXD-BLK
GTI, GTI LE (96)	1095XPD-BLK
GTI/GTI LE (97-04)	1097GTX-BLK
GTI, RFI (05)	2005RFI-BLK
GTI, GTI SE, GTI 130 (96-08)	2006GTI-BLK
GTS (94-96)	1077GD-BLK
GTS (97-00)	1098GTS-BLK
GTS (01-02)	1097GTX-BLK
GTX (94-95)	1077GD-BLK
GTX (96-03)	1097GTX-BLK
HX (95-98)	1085HXD-BLK
RX, RXDI (00-03)	1098GTS-BLK
RXP (04-08, RXP-X (08), RXT (04-07)	2004RXP-BLK
RXT-X 255HP (08)	2008RXT-BLK
SP (88-93) SPI (88-93) SPX (92-93)	1077S3D-BLK
SP (94-95) SPI (94-95) SPX (94-95)	1077SD-BLK
SP (96) SPI (96-98)	1096SXD-BLK
SP (97-98)	1098SP-BLK
SPX (96-00), XP/XP DI (96-04)	1096SPD-BLK
XP, XPDI (93-94)	1077SD-BLK
XP, XPDI (95)	1095XPD-BLK

Kawasaki	Part No.
ZXi 750/900/1100 All	1090KZD-BLK
900STS (01)	1097KTX-BLK
STX 750/900/1100 (96-00)	1097KTX-BLK



## JSU SIDE RAIL MOLDINGS

Gain the secret Pro racers edge. Get rid of those ill-fitting OEM side moldings that scrub speed and cause poor under the rail water flow during racing conditions. These are the same 1 1/2" inch wide molding used by the Kawasaki Racing Team.

Description	Part No.
8' Long Standup Kit	JSU-800-BUMPER
12' Long Sitdown Kit	JSU-STXR-BUMPER



## TBM RACE BUMPERS

Introducing the easiest way to enhance the handling of your SX-R simply by replacing your stock bumper with our adhesive backed bumpers. These eliminate the need for rivets and narrows the bond flange increasing the lean angle of your ski. They also enhance the general appearance significantly.

Description	Part No.
Bumpers 800SXR (7/8" wide)	TBM117
Hydrospace (7/8" wide)	TBM117-HS
STXR/12F/15F/	TBM117-STXR
ULTRA 250X/260X (1 1/4" wide)	



## RIVA RAIL MOLDING KITS FOR KAWASAKI

Directly replaces the bulky, sharp-edged stock rails saving weight as well as your hands! Reduces corner drag on SX-R models. Includes rivets.

Description	Part No.
SX-R	RK5-RMK-080
STX/Ultra 250X	RK5-RMK-085





**Fabric: Glen-Tuf**

Woven polypropylene is very abrasion resistant. Fibers resist moisture, rot, mildew and are treated for UV resistance.

Reinforced openings for trailer pins and attachments. Adjustable heavy duty, multi-strand shock cord sewn in hem.

Reflexite® safety reflectors on back of cover give additional warning notice when watercraft is moored on trailer. (Reflexite® meets both Federal and USCG specifications.)



Non-scratch, corrosion free access zipper for vest and wet-suit storage. Plus a quick-dry mesh bag with Velcro® closure for gloves and other small items.

Durable, double-stitched, overlapped seams.

Strong, bartacked tie-down loops secure cover on watercraft for trailering.



SEA DOO	Part No.
3D (04-06), 3D DI (06)	XW873BL
GSX (96-97), GSX LTD (97-99), GSX RFI (99-00), GS (97-01), GSI (97)	XW836BL
GT (90-91), GTS (92-00), GTX (92-95), GTi (96)	XW812BL
GTI (01-05), GTS (01), GTI LE (02-05), GTI LE RFI (03-05)	XW859BL
GTI SE (06) with mirror	XW877BL
GTI SE (06) without mirror	XW878BL
GTX (96-97 & 00-02), GTX RFI & LTD (98-02), GTI (97-00), DI (00-01)	XW835BL
GTX4TEC (02-05), GTX4TEC SC & LTD (03-05), GTX4TEC VTCE(03-05), GTX DI (02-03)	XW860BL
GTX, GTX Ltd, Wake (07-08), RXT, RXT-X	XW879BL
GTX, Ltd, SC, Wake (05-06), RXT (05-06), Wakeboard (04)	XW874BL
<i>*Note: This Cover has No Tie Down Opening At The Rear</i>	
HX (95-97)	XW834BL
LRV (00-01), LRV DI (02-03)	XW854BL
RX (00-02), RX DI (00-03), RXX (01)	XW855BL
RXP (04-06)	XW868BL
RXP, RXP-X (07-08)	XW880BL
RXT(05-06)	XW860BL
RXT (07-08), RXT-X, GTX, GTX LTD, Wake	XW879BL
SP 580 hull w/o grab rails (88-93)	XW813BL
SPI/SPX 580 hull w/grab rail (93)	XW820BL
SP/SPI 650 (94-97), SPX (94-99), XP650 w/grab rail (93-96)	XW823BL
XP 580 hull w/grab rail (92)	XW811BL
XP (97), XP LTD (98-99), XP (00-02), XPDI (03-04)	XW846BL

SEA DOO JET BOATS	Part No.
Speedster (95-97), Sportster (00-02), Challenger (00-01)	XW840BL
<i>*All 14.5 Feet</i>	

HONDA	Part No.
Aquatrax F12, F12X (02-07), GPScape (05-06)	XW863BL
Aquatrax R-12X (03-07), R12 (04-06)	XW864BL

POLARIS	Part No.
Hurricane 700 (96-97)	XW839BL
Octane (02-04)	XW861BL
Pro 758 (00)	XW810BL
SLT 750 (93-95), SLTX (96-99), SLTX 1050 (97), SLTH (98-99)	XW824BL
SLX (96-00), SLX Pro 785 (97-99), SLXH (98)	XW810BL
Virage (00-04), Virage I (02-04), Virage TX (00-02)	XW858BL
Virage TXi (01-02), Freedom (02-04)	

KAWASAKI	Part No.
550SX (90-95)	XW803BL
650SX (87-93)	XW804BL
650X-2 (86-95)	XW806BL
750SX (92-95), 750SXI (95-96&02), 750SXI-Pro (98-01)	XW805BL
800SXR (03-06)	XW865BL
800SXR (07-08)	XW882BL
1200STXR (02-05), STX-12F (03-04), 1100STX DI (00-03), 900STX (01-05)	XW856BL
SC 650 (91-95) - Sport Cruiser	XW808BL
SS 750 (92-97), SS-Xi (93-99) - Super Sport	XW809BL
ST 750 (93-95), STS 750 (95*97), 750 STX (98), 900 STX (97-98)	XW819BL
STX900 (99-00), STX1100 (97-99), 900STS (01-02)	XW842BL
STX-12F (05-06), STX-15F (04-06)	XW869BL
TS 650 (89-96) - Tandem Sport	XW807BL
Ultra 150 (99-05), Ultra 130 D2 (01-04), 130 DI (02)	XW850BL
Ultra 250X (07), LX (07)	XW881BL
ZXI 750/900 (95-97), ZXI 1100 (96-03)	XW818BL

YAMAHA	Part No.
FX-1 700 (94-95)	XW822
FX140 (02-05), FX160 (04)	XW862BL
FX Cruiser (02-05), FX Cruiser HO (04-05)	XW867BL
FX Cruiser (06), Waverunner (06-08) Cruiser HO (06-08)	XW875BL
FX, FX HO (06)	XW876BL
GP760 & 800 (97-00), GP1200 (97-99)	XW843BL
GP1200R (00-02), GP800R (01-05), GP1300R (03-06)	XW849BL
Super Jet 650 (90-93), Super Jet 700 (94-95)	XW814
Super Jet 700 (96-06)	XW837BL
SUV1200 (99-04)	XW852BL
VX Cruiser (07)	XW883BL
VX110 Deluxe (05-08)	XW871BL
VX110 Sport (05-06)	XW872BL
Wave Blaster 701 (93-96)	XW821BL
Wave Blaster II 750 (96-97)	XW838
Wave Raider 701 & Deluxe (94-97), 760 (96), 1100 (95-96)	XW827
Wave Runner III 650/700 (90-97), GP700 (95)	XW816
Wave Runner XLT 1200 (01-05), XLT 800 (02-04)	XW870
Wave Venture 700 (95-96 & 98), 760 (97), 1100 (96-97)	XW831BL
XL700 (99-04), XL760 (98-99), XL1200 (98)	XW847BL
XLT1200 (01-05), XLT800 (02-04), XL1200LTD (99-00), XL800 (00-01)	XW853BL

Some models listed above might not be inventoried. If they are not inventoried then the item is a "Special Order Item" and may take up to 2 weeks to be available.

FOUR STROKE  
INTAKE SYSTEMS  
ENGINE/GASKETS  
EXHAUST  
DRIVE LINE HANDLING  
ELECTRICAL  
WATERLINE /BILGE  
STEERING & CONTROLS  
BODY  
ACCESSORIES  
SERVICE TOOLS /HARDWARE  
CHEMICAL